

# THE IDIOSYNCRASIES OF YOUR NEW MINI

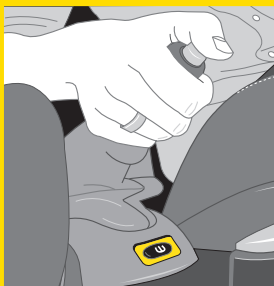


## YOUR SEAT HAS A MEMORY.

Push the outside handle down to tilt the front seat forward and access the back seat. To return the front seat back to its original position, simply slide it back on its track first, and then push the top of the seat back. Once you master the technique, it will work wonders to keep your seat just the way you want it.

## FLAT TIRE MONITOR BUTTON.

There's a small, curious button located under the hand brake. It's the Flat Tire Monitor reset button. Check out the manual for proper use. And then hopefully you won't be looking for this button again anytime soon.

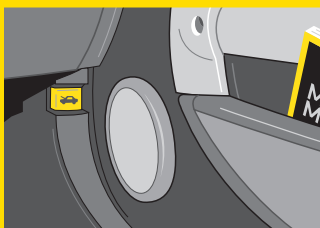
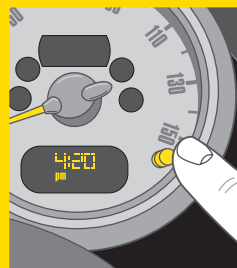


## SEAT HEIGHT ADJUSTMENT.

The adjustment lever is pumped up and down like a ratchet to adjust the seat height. Be sure not to use this lever when trying to slide the seat forward and backward. There's a separate handle for that located under the seat on the opposite side. For a better understanding, see the owner's manual.

## WHERE'S THE CLOCK?

The digital clock is actually built into the speedometer. To find out the time, simply push the trip odometer button (it's the only button on the speedometer). This may seem like a bit of an effort to find out the time, but when you're motoring, it's not about making good time. It's about enjoying the journey. To learn how to set your clock, see the owner's manual.

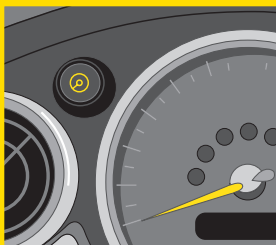
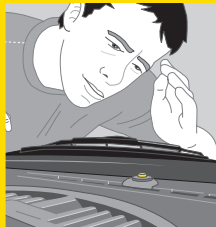


## BONNET RELEASE.

The "pop-the-hood" latch is located on the passenger side under the dashboard and glove compartment. Why? Well, the car is built in England, after all.

## WHAT'S THE LITTLE "BUTTON" ON THE TOP OF THE DASH?

Actually, this is a small sensor. Not a button. It's not necessary to push it, although you may if you want to. It's merely a UV sensor for the automatic A/C option. If you don't have automatic A/C, then you won't have the "button." Don't worry about it.



## DASHBOARD DIMMER SWITCH.

You'll notice the adjustment knob for the luminosity (it's a word, we checked) of your dashboard doesn't turn. That's because it's not really a knob. It works by tapping. Each time you tap and release, the lights will get darker. If you press and hold, the lights will get brighter.

## POWER STEERING.

Besides being a mouthful, the Electro-hydraulic Power Assisted Steering is powered by a separate electric motor so as not to drain horsepower from the engine. This motor makes a high-pitched sound when it's working properly. In a parking lot, at low speeds, you can actually hear it. Don't worry. This is normal. All systems check.



## ICY WARNING.

When the outside temperature drops to 37 degrees Fahrenheit, the temperature reading flashes "37" and a tone sounds. This is simply a warning that the roads might become slick or icy since the weather is near freezing. Be careful.

## GETTING OUT.

Though inevitable, this is the saddest part of owning a MINI. You can unlock your door by flipping the toggle switch, which opens both doors and the tailgate. Or you can just pull twice on the door handle. The first pull unlocks the door. The second pull opens the door. (Note: If you don't like this idiosyncrasy, talk to your dealer. They can reprogram your automatic locking system.)

